

SPECIFICATIONS

Model	ATS-120R3	ATS-120L6	ATS-120L8	ATS-120L10
Angle Measurement				
Measurement Method	Absolute Encoding			
Minimum Readout	1"			
Accuracy	2"			
Telescope				
Magnification	30X			
Field of View	1°30'			
Minimum Focusing Distance	1.5m			
Reticle	Illuminated			
Compensator				
System	Single-axis liquid tilt sensor/Dual-axis(optional)			
Working Range	±3'			
Accuracy	1"			
Distance Measurement (with Reflector)				
Single Prism (Under general/good conditions)	2500m/3000m	4000m/5000m		
Reflective Sheet	800m	1000m		
Accuracy	2mm+2ppm			
Measuring Time(Fine/Tracking)	1s/0.5s	0.8s/0.4s	0.8s/0.3s	
Distance Measurement (Reflectorless)				
Reflectorless Range (Calculated by Kodak Gray Card white side with 90% reflective)	350m	600m	800m	1000m
Accuracy	3mm+2ppm			
Measuring Time	1.5s			
Communication				
Internal Data Memory	Approx.20000 Points/SD Card			
Interface	Standard RS232,Mini-B,USB pen drive			
Data Collector	PDA (Optional)			
Data Transfer and Processing Software	Geomatic Office			
Operation				
System	Real-time Operating System			
Display	High resolution backlight black and white display with contrast adjustment/Graphics 192x96 pixels			
Keyboard	2 sides Alphanumeric backlit crystal keyboard			
Laser Plummet				
Type	Laser point,4 brightness levels adjustment/Optical plummet(optional)			
Centering Accuracy	1mm at 1.5m instrument height			
Environmental				
Operating Temperature	-20°C- +50°C(-4F to +122F)			
Storage Temperature	-40°C- +70°C(-40F to +158F)			
Temperature&Pressure	Manual input			
Dust&Water Proof (IEC60529 Standard)	IP55			
Power Supply				
Battery Type	Li-ion battery			
Voltage/Capacity	ZBA-400:7.4V(DC)/3000mAh			
Operating Time With ZBA-400	Optimal 16 hours(Continuous angle measurement every 30 seconds)/10 hours(Typical)			
Measuring Times	Approx.12000 times			

The name and address of the manufacturer:

Suzhou Sunway Technology Co., Ltd.

Address: NO.892 Wusong Road, Guo Xiang street ,Wuzhong District, Suzhou City, Jiangsu Province, China.

Phone: 0512-82288890 Ext:8012

Fax: 0512-82288891



ATS-120 series Total Station

ATS-120R3/ ATS-120L6
ATS-120L8/ ATS-120L10

- STM32 Architecture
- Powerful and Fast EDM Capability
- Intelligent Calibration Software
- Absolute Encoder Angle Measurement
- Stable Dual-axis Compensation
- Rich Communication and Transmission



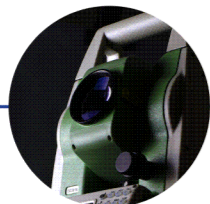
Product Introduction

ATS-120 series Total Station

ATS-120 series Total Station is used in engineering, produce by Suzhou Sunway Photoelectric Technology Co.Ltd., a subsidiary of a Hi-Target Surveying Instrument Co.Ltd.It have no prism measurement function,absolute encoder angle measurement technology,angle measurement accuracy 2 seconds,no prism measurement accuracy 3mm+2ppm,and a breakthrough in the use of the STM32 architecture. ATS-120 series Total Station configures a variety of communication interfaces and smart online calibration software,implements the diversity of data transmission selection and real-time detection function.

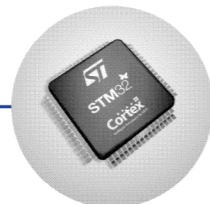


Technical Features



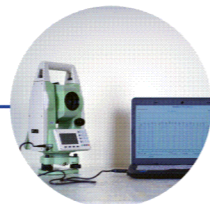
Powerful and Fast EDM Capability

ATS-120 series Total Station's no prism measurement range can up to 800 meters. No prism measurement accuracy 3mm+2ppm.Accurate measurement 0.8S,Track measurement 0.3S.



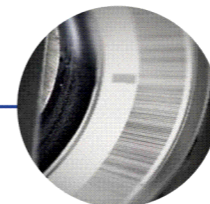
STM32 Architecture

The STM32 MCU based on ARM Cortex™-M processor enables the total station has extra high processing speed and low-power consumption.



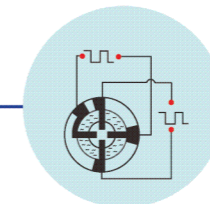
Intelligent Calibration Software

Accessible for real-time diagnosis to ensure trouble-free operation.The software can determine 90 percent of the Problem.



Absolute Encoder Angle Measurement

1023 pairs of absolutely coded disc.All Series' angle measurement accuracy is two seconds. Starting without initialization.The data will save automatically when the power failure.



Stable Dual-axis Compensation

Stable Dual-axis Compensation.Compensation range 3'.Operation can be visualized and High accuracy of angle measurement.



Rich Communication and Transmission

With RS232C,SD,USB and MiniUSB communication interface.make data transmission more convenient.

Software Features

